

Variable Frame-rate Camera

VFC-1000

Compact high-speed image capture camera



The VFC-1000 Variable Frame Rate Camera is a highly compact high-speed image capture camera employing some of the latest design techniques. Camera recorded images can be downloaded from camera memory and processed/viewed as slow motion television video (NTSC or PAL format). Or camera images can be processed as digital data for network and other application uses. Recording rate can be set from 50 frames/second to as fast as 8,000 frames/second. High quality image resolution allows easy viewing of needed details within an image. Image data can also be real time confirmed and file saved for later processing use. All in all the VFC-1000 is an excellent addition to research and development, production, medical, movement analysis and many other facilities requiring low cost but clear and dependable camera imaging support.



Take speed and Resolution

250 frames/second when full frame take (512 x 472 pixel images)
Max. speed of 8,000 frames/second

High speed electronic shutter

Max. operational speed of 1/100,000 of a second without image blur occurring.

IC memory and image record

256MB memory standard, record approx. 1000 frames in 4 seconds when 250 frames/second record.

Segmented memory record feature

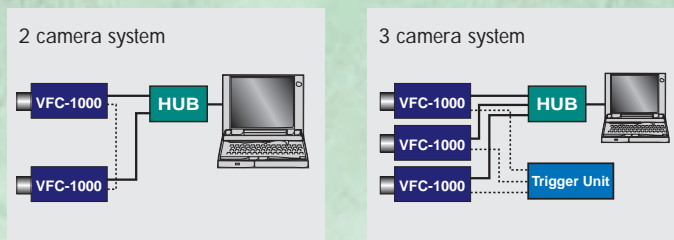
Memory cache can be software split into up to 4 record regions for more efficient memory use.

Web control via Internet Explorer

Control camera operations via Windows OS standard Internet Explorer browser application.

Take sync multiple cameras

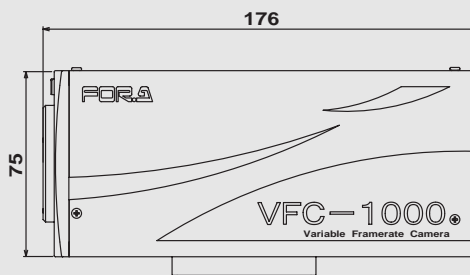
Master/slave feature (2 cameras), sync up to 3 cameras to external take signal (option).



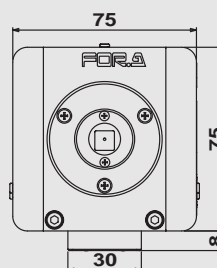
Specifications

	VFC-1000SB	VFC-1000SC
Camera elements:	1/3 inch CCD (monochrome)	1/3 inch CCD (color)
Lens mount:	C-mount	
Resolution/	512(H) x 472(V)pixel: when 50, 125, 250 frames/second	
Recording rate	512(H) x 232(V)pixel: when 500 frames/second 256(H) x 212(V)pixel: when 1,000 frames/second	
	Options add	
	256(H) x 98(V)pixel: 2,000 frames/second	
	128(H) x 88(V)pixel: 4,000 frames/second	
	128(H) x 34(V)pixel: 8,000 frames/second	
Shutter speed:	From 1/250 to 1/100,000 of a second	
Recording time:	4 seconds (when over 250 frames/second)	
	Options add	
	8 seconds (when over 250 frames/second)	
	16 seconds (when over 250 frames/second)	
Record modes:	Endless, external or PC triggered (start, center, end select)	
Video output:	NTSC or PAL (Composite or S-Video)	
Interfaces:	RS-232C (Camera control) Ethernet (Camera control / image transmit)	
Synchronized camera takes	Master/slave configure (2 cameras) or external sync 3 cameras (option)	
External input/trigger:	TTL level, make contact	
Power:	Via AC adaptor cable (100VAC-240VAC to 16VDC at camera side)	
Consumption:	Approx. 0.6A	
Dimensions:	75 (W) x 75 (H) x 176 (D) mm (without connector)	
Weight:	Approx. 1.2kg	
PC requirements for camera support	OS: Windows 2000 or Windows NT CPU: Pentium III 700MHz or better Memory: 128MB or better HDD: 20GB or better Connection interface: 100Base-TX, Ethernet Graphics size support: 800 x 600pixel or betterPC-GUI	
Software:	PC-GUI (Microsoft Windows2000 / Internet Explorer 5.5 or higher)	
Options	Double record memory (to 8 seconds) Quadruple record memory (to 16 seconds) 8,000 frames/second record capability Lighting tripod set Lens (varied selection available)	

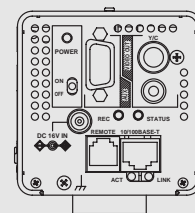
Side View



Front View



Back View



FOR-A COMPANY LIMITED

Head Office : 3-8-1 Ebisu, Shibuya-ku, Tokyo 150-0013, Japan

FOR-A UK Limited : UNIT C71, BARWELL BUSINESS PARK, Leatherhead Road, Chessington Surrey, KT9 2NY, U.K.

FOR-A Italia S.r.l. : Viale Europa 50 20093, Cologno Monzese (MI), Milan, ITALY

FOR-A America Corporate Office : 2400 N.E. Waldo Road, Gainesville, FL 32609, U.S.A.

FOR-A America West Coast Office : 11125 Knott Ave., Suite #A, Cypress, CA 90630, U.S.A.

FOR-A America East Coast Office : 1065 Avenue of the Americas Suite #1701A New York, NY 10018, U.S.A.

FOR-A America Atlanta Office : 4219 Burns Heritage Trail, Roswell, GA, 30075, U.S.A.

FOR-A Corporation of Canada : 425 Queen St. W. #210, Toronto, Ontario M5V 2A5, CANADA

Homepage: <http://www.for-a.com>

+81 (0)3-3446-3936

Fax : +81 (0)3-3446-1470

+44 (0)20-8391-7979

Fax : +44 (0)20-8391-7978

+39 02-254-3635/6

Fax : +39 02-254-0477

+1 352-371-1505

Fax : +1 352-378-5320

+1 714-894-3311

Fax : +1 714-894-5399

+1 212-861-2758

Fax : +1 212-861-2793

+1 770-645-7776

Fax : +1 770-234-5165

+1 416-977-0343

Fax : +1 416-977-0657

